



Wayne Presbyterian Church



News & Views

February 21, 2021 First Sunday of Lent Casey Thompson preaching

Watch [online](#) at 9:30 AM
(music begins at 9:15)

Weekly bulletins are available.

They will be uploaded weekly by the end of day Friday. You can download and /or print a copy by clicking [here](#).

Have you picked up your 2021 offering envelopes yet? The 2021 envelopes are in the church office ready to be picked up. Contact [Ruth Wisniewski](#) or call her at 610-688-8700 x 241 to make arrangements for pick up.

Sunday Classes

Centering Prayer

8:15 AM - Prayer & Scripture on [Zoom](#)

Adult Education

9:30 AM - Joe Modica's Class / Gospel of Mark - via Zoom - email [Todd Cameron](#) for Zoom link.

Children's Sunday School

New classes have started. Contact [Kelli Masters](#) for more info.

Youth Ministry

4:00 pm Confirmation Class via Zoom

6:00 pm - Youth Group via Zoom

College Ministry

2:00 PM Bible Study via Zoom



“Drive-Thru” Ashes - Ash Wednesday, Feb. 17

5:00 – 6:00 p.m.

Join us in the Wayne Pres parking lot in observance of Ash Wednesday, a day of repentance and renewal that marks the beginning of Lent. How it will work:

- Drive to the back entrance off of Wayne Ave.
- Pull your vehicle up toward the entrance staying in your vehicle.
- Roll your window down to receive a blessing and imposition of ashes.
- Please wear a face mask.

Your pastors will be masked, wearing gloves, and observing all safety precautions.

Lenten Prayer and Reflection - 5:00 - 7:00 PM Wednesdays starting February 24 through Wednesday March 24

During the season of Lent the Sanctuary will be open from 5-7 PM on the five Wednesday evenings following Ash Wednesday for prayer and reflection. Since repentance and renewal are the touchstones of Lent, we will be offering members a solemn and safe place to be in communion with God. To that end, we ask that you use the southwest entrance to the sanctuary that faces Lancaster Ave. A mask is required to enter and



socially distanced places will be marked in the pews. Mark your calendar from 5-7 pm for the following Wednesdays in Lent: February 24, March 3, March 10, March 17 & March 24.



Thursday Morning Men's Ministry 7:00 AM via Zoom

Dr. Boyer, Professor of Theology at Eastern University, is our guest speaker for February. See [flyer](#) for full details.

Contact [Tim Pretz](#) or [Sal Ambrosio](#) with questions and the Zoom link.



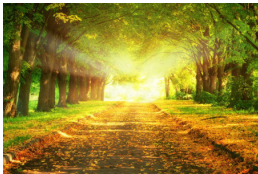
Write it Forward - A Church-wide Letter Writing Campaign

"Bringing joy to others is the fastest way to experience joy oneself!" (Quoting the Dalai Lama and Desmond Tutu.) Our letter writing campaign is off to great start! Anyone can receive a letter and EVERYONE can write a letter! This week's suggestion is write to someone who is of a different generation than yourself,

younger or older. Let them know you are thinking of them! Check [here](#) for more information. Questions about Write It Forward? Email [Janice Mack](#).

Sign up for the Youth 4th Wednesday Event by February 19

Does your youth want to join us for creating cards on Zoom for those in our congregation who need a little extra love right now? If so please RSVP to [Mary Lou](#). We cannot add you in after the 19th unless there are extra bags, as there are specific materials needed.



An Invitation to Walking the Mourner's Path In April

The winter is long, losses mount; grief is real and isolation complicating. Won't you join our community of caring to "walk the mourner's path"? Walking the Mourner's Path is a process oriented eight week class / series intended to help one move through grief forward into joyful living. Please consider joining if you have lost a loved one and would like to make space to grieve and move

forward. For more information and to let us know of your interest in participating in a Walking the Mourner's Path class, please contact [Lynne Samson](#), or [Buff Barnes](#) by March 8. The next class will begin in early April and will be on Zoom.

Wayne Presbyterian Church | 610-688-8700 | www.waynepres.org
125 E. Lancaster Ave. | Wayne, PA 19087